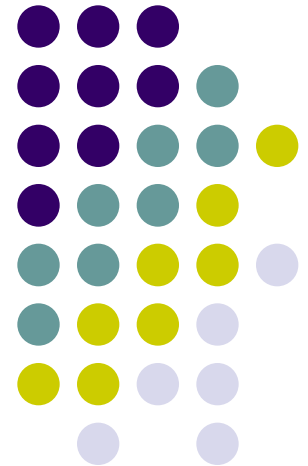




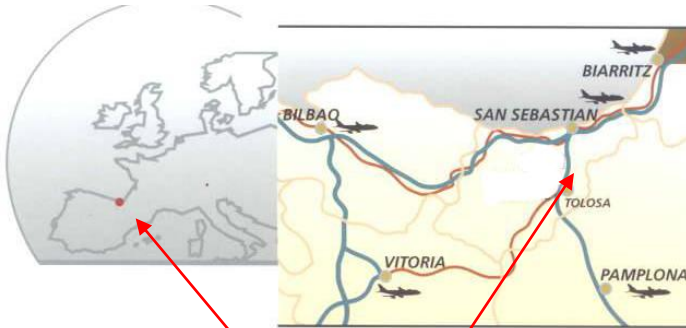
# ***COMPANY PRESENTATION***

**GUIBE S.A**

***2012***



# **GUIBE -LOCATION**



**GUIBE**



***San Sebastian***



***MANUFACTURING  
PLANT***





# **COMPANY PROFILE**

- ***GUIBE S. A.*** was founded in 1976, and since his origin the Company has been focused in manufacturing equipment for transmission field, mainly gears and gearboxes for the hole industry.
- ***Actually the Company is specialised in manufacturing standards and special gearboxes, adapted to the customer needs.***
- ***It is the first Spanish gearbox manufacturer.***
- ***Others products & services offers are: Gears, mechanical jacks, couplings and gearboxes repair (own or competitor branches)***
- ***The actual staff is 65 employees.***
- ***The Company has made important investments in the last years: (08-09) (mainly new grinders machines ) and 2010 (new test bench ). The most important investment in 2011 has been a new gears checking machine (up to 2000 mm diam).***
- ***Our main commitment is to manufacture quality product, and offer the best possible services to our customers.***



# **COMPANY HISTORY**

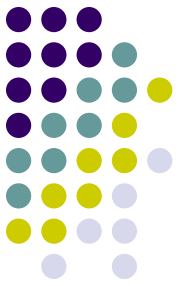
- ***1976 Guibe made the first inroads.***
- ***1984 First Tandem gearboxes manufacturing.***
- ***1995 First export sales.***
- ***2004 Open new facility ( Irura ).***
- ***2008-09 Acquire new machinery (mainly grinding machines).***
- ***2009 New gears test by NITAL.***
- ***2010 New test bench.***
- ***2011 New gears checking machine.***





# **MANUFACTURED PRODUCTS**

- **SPECIAL GEARBOXES**
  - **NEW PROJECTS & MACHINES**
  - **CUSTOMIZED UNITS**
- **STANDARD GEARBOXES**
  - **OR WITH SOME DIMENSION CHANGES**
- **GEARS**
- **GEARBOXES REPAIR**



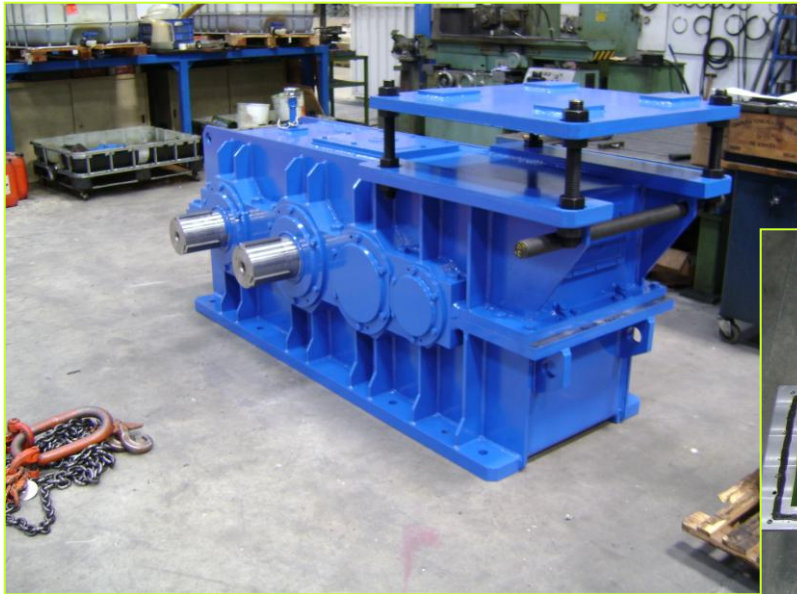
# **SPECIAL GEARBOXES**

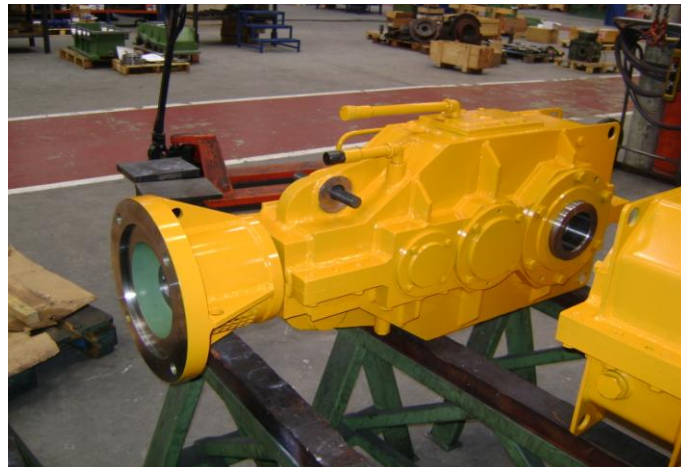
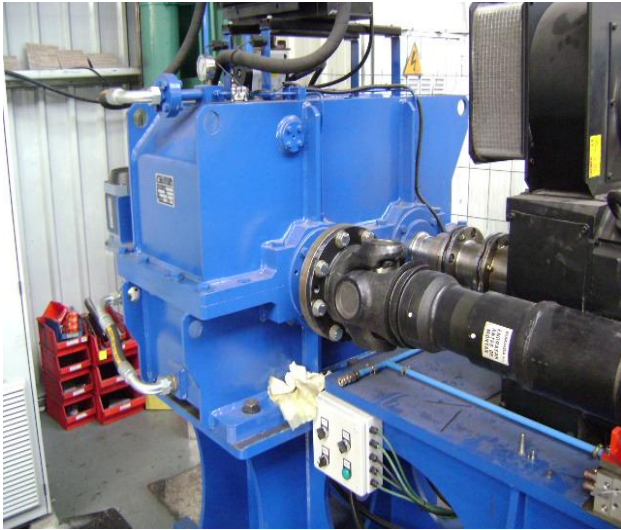
## **- NEW PROJECTS & MACHINES**

- ***Manufactured by our own design or under customer specifications.***
- ***Customers:***
  - \* **Engineerings**
  - \* **O.E.M**









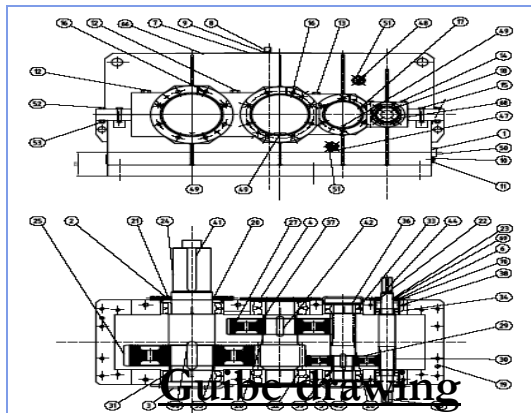




# **SPECIAL GEARBOXES**

## **- CUSTOMIZED UNITS**

- **Interchangeable with other brands gearboxes (same outside dimensions).**
- **Customers:**
  - \* **End users.**



**Guibe drawing**



**Interchangeable gearbox**









# **STANDARD GEARBOXES**

- ***Parallel & perpendicular shafts, with massif – hollow shafts etc.***  
**Nominal torque up to 1.500.000 Nm.**







# **GEARS**

- ***Guibe manufactures all kind of gears: cutting, and grinding.***

**Cutting max: 5 m**

**Grinding max: 2,8 m**



# REPAIR

- *Repair service.*

*Our onw gearboxes & others brands.*

*\* Including checking, refourbishment or repower of gearboxes, for improving the original features.*



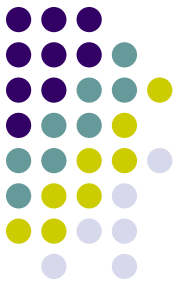


# **INDUSTRIAL FIELDS**

- ***Guibe customers belong to a wide range of industrial fields such as:***
  - ***Steel industry.***
  - ***Cement & Quarryng.***
  - ***Minning.***
  - ***Crane & Lifting.***
  - ***Plastic & Rubber.***
  - ***Paper industry.***
  - ***Sugar industry.***
  - ***Renewable energy: ( wind, hydraulic, sea waves)***
  - ***Petrochemical***

# APLICACIONES

## *STEEL INDUSTRY*







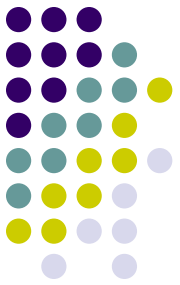
# APPLICATIONS

**CEMENT**

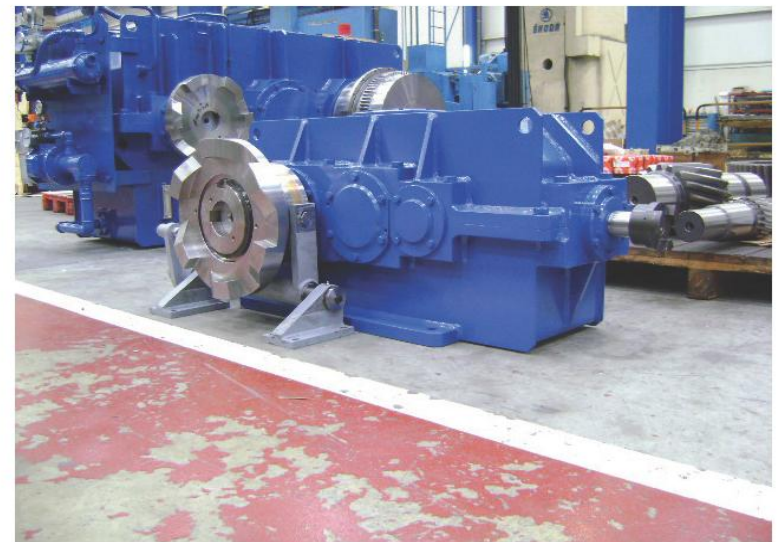
**QUARRYING**

**MINING**

**CONVEYORS**







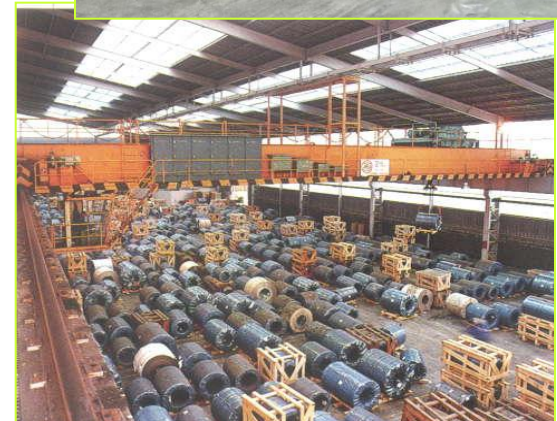
# APLICACIONES



## **CRANES**



***Container cranes***



***Industrial cranes***



# APLICACIONES



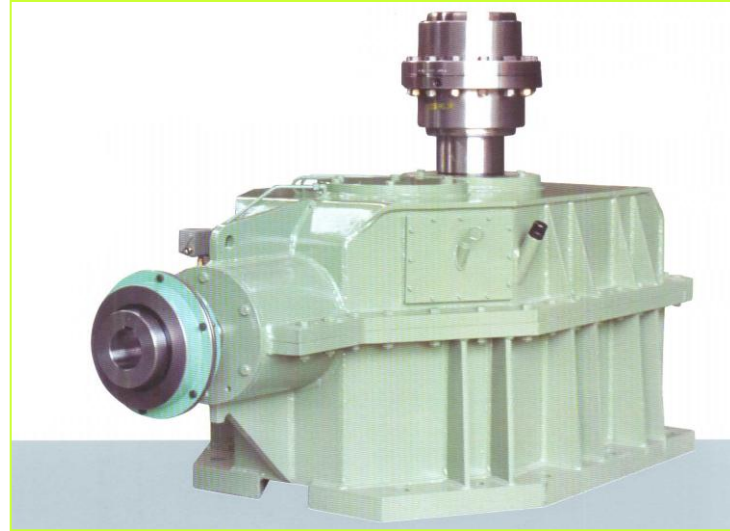
## **PLASTIC & RUBBER**



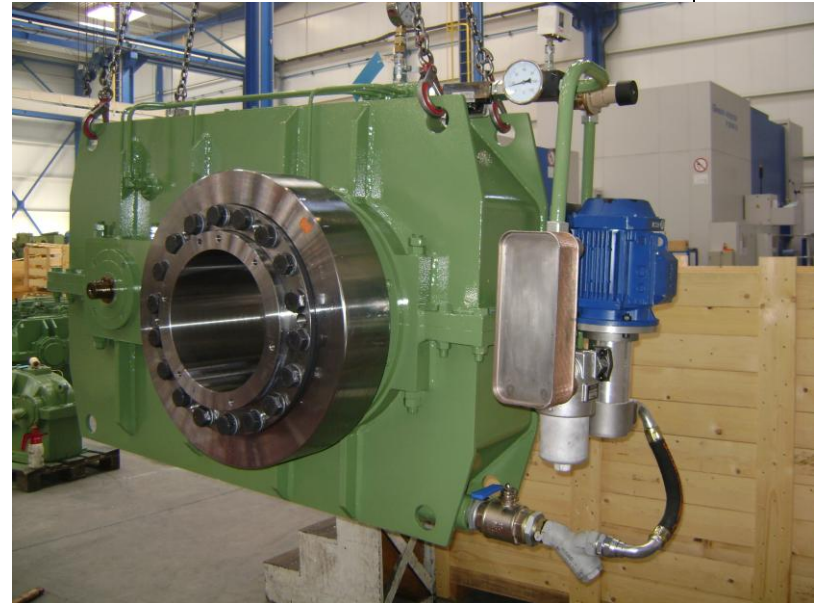


# APLICACIONES

## *PAPER INDUSTRY*







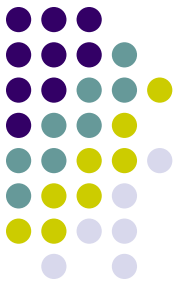


# APLICACIONES

## **SUGAR INDUSTRY**



© Paco Ayala | N° 29208 | [www.andaluciaimagen.com](http://www.andaluciaimagen.com)



# APLICACIONES

## RENEWABLES ENERGY



***Sea waves***



***Wind***



***Hidraulic***



# **MANUFACTURING MEANS**

- ***GUIBE, has his own integral capacity for developing new projects:***
  - \* ***Engineering & Calculation.***
  - \* ***Manufacturing & Test.***
  - \* ***Quality control.***
  - \* ***After sales services.***





# MANUFACTURING MEANS



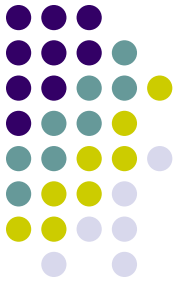
Cutting: ( $\varnothing$  max) 5000mm  
Grinding: ( $\varnothing$  max) 2,8m.  
Hobing: max. 13 m.



\* Hoisting up to 63 Tn.







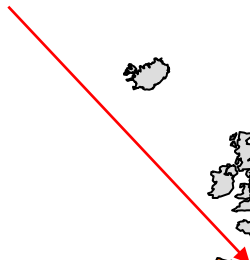
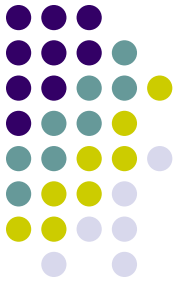


## **REFERENCES LIST**

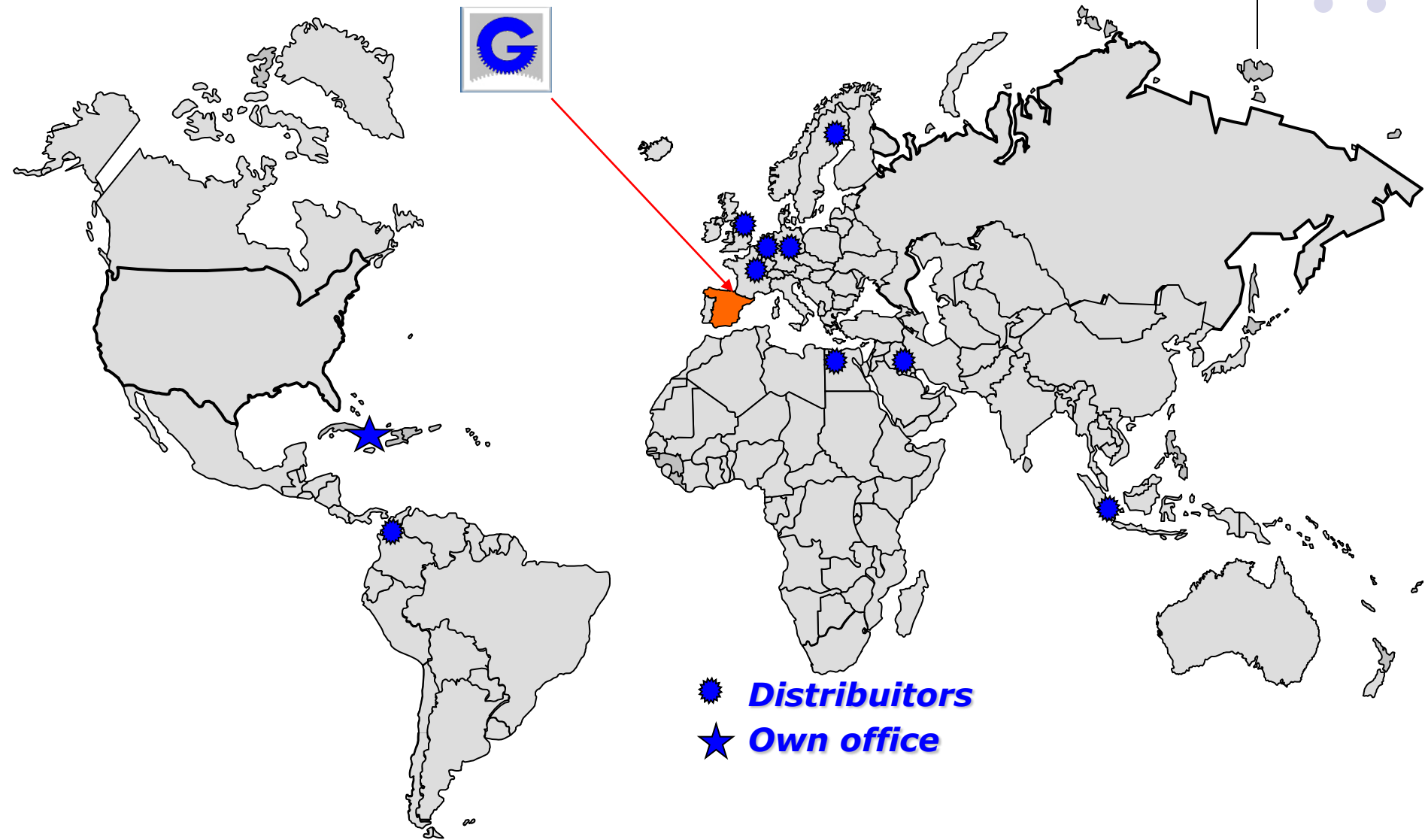
- **FAGOR ARRASATE (ESP)** ( **STEEL** )
- **SIEMENS VAI (ESP/FR)** ( **STEEL** )
- **ARCELOR MITTAL** ( **STEEL** )
- **FARREL / HF (USA/UK/ GER)** ( **PLASTIC/RUBBER** )
- **BRIDGESTONE (ESP-ITL-FRA-HUN)**( **PLASTIC/RUBBER**)
- **TALLES JASO (ESP)** ( **CRANE**)
- **IND. ELECT. GH (ESP)** ( **CRANE**)
- **ROSSI (FR)** ( **GEARBOX. MANUFACTURER**)
- **EUROPAC (ESP/PORT)** ( **PAPER**)
- **APP (INDONESIA)** ( **PAPER**)
- **SAHUT CONREUR (FR)** ( **MINERAL / MACHINE**)
- **IBERCISA (ESP)** ( **SHIPS / MACHINE**)



# ***SALES NETWORK***



 ***Distributors***  
 ***Own office***



# QUESTIONS?

